

B1=B2=B3=B4=B5=B6=B7=B8=B9=B10=B11=B12

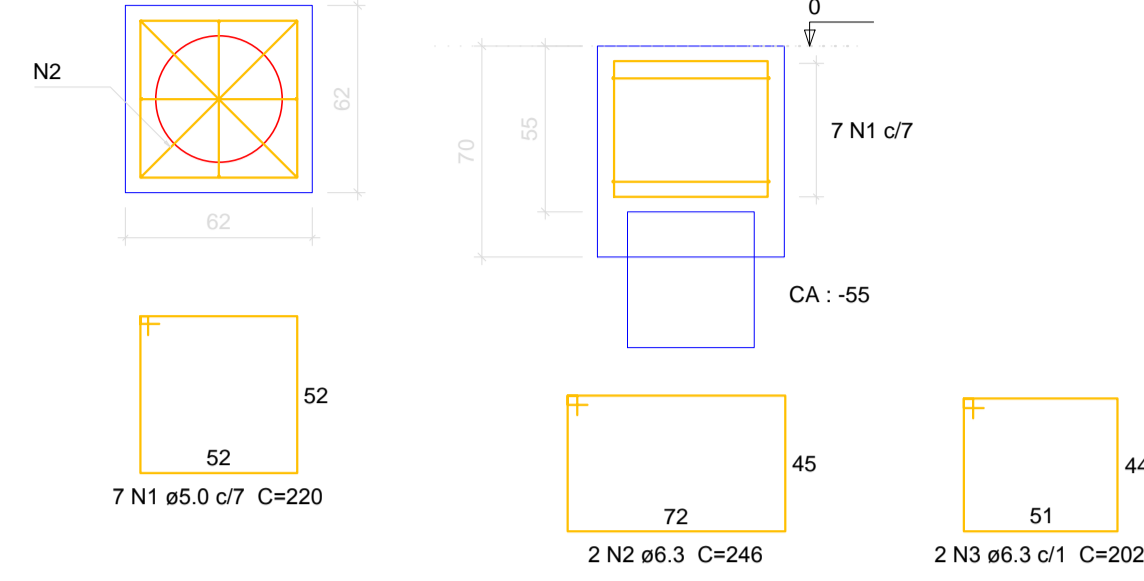
1042

PLANTA

ESC 1:25

CORTE

ESC 1:25



Relação do aço

12xB7

AÇO	N	DIAM	Q	UNIT (cm)	C.TOTAL (cm)
CA60	1	5.0	84	220	18480
CA50	2	6.3	24	246	5904
CA60	3	6.3	24	202	4848

Resumo do aço

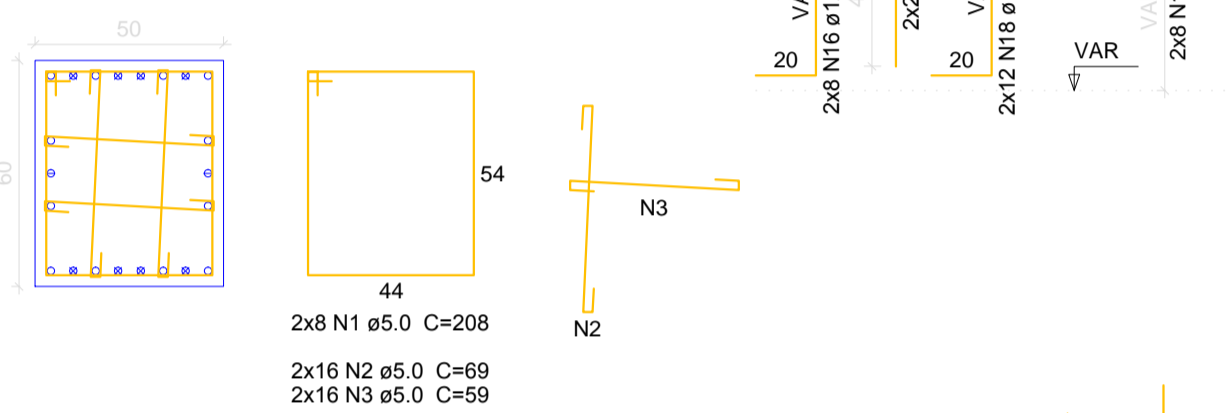
AÇO	DIAM	C.TOTAL (m)	PESO + 10% (kg)
CA50	6.3	107.6	28.9
CA60	5.0	184.8	31.3
PESO TOTAL			
CA50			28.9
CA60			31.3

Vol. de concreto total (C-30) = 2.98 m³  
Área de forma total = 20.83 m²

P1=P4

FUNDAÇÃO - L1

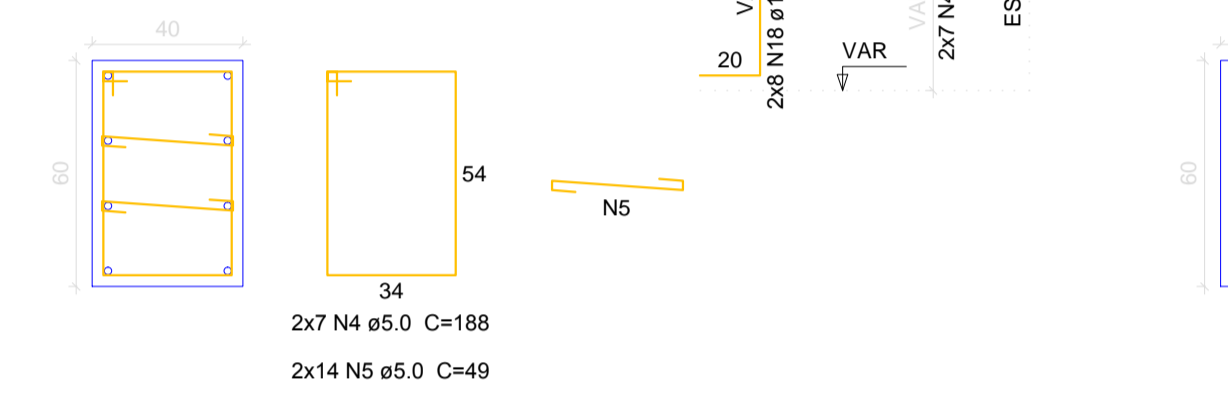
ESC 1:20



P2=P3

FUNDAÇÃO - L1

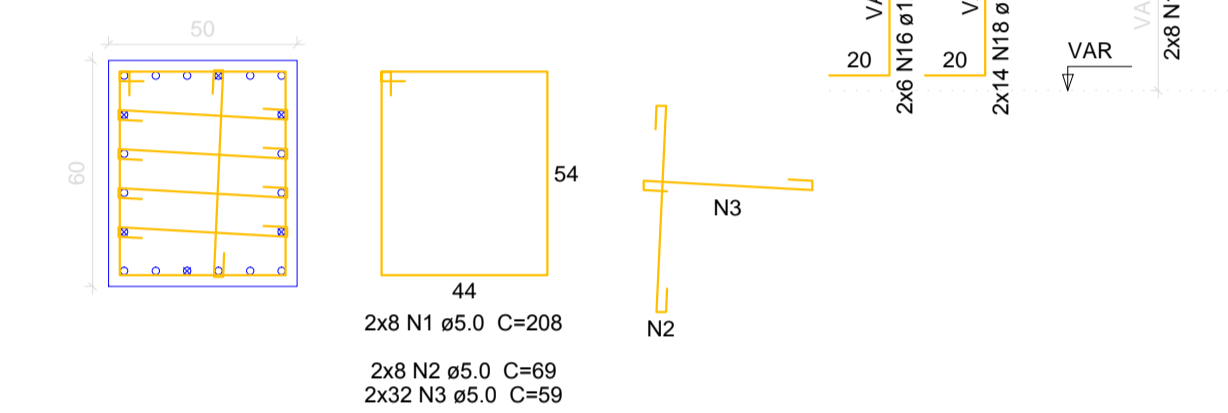
ESC 1:20



P9=P12

FUNDAÇÃO - L1

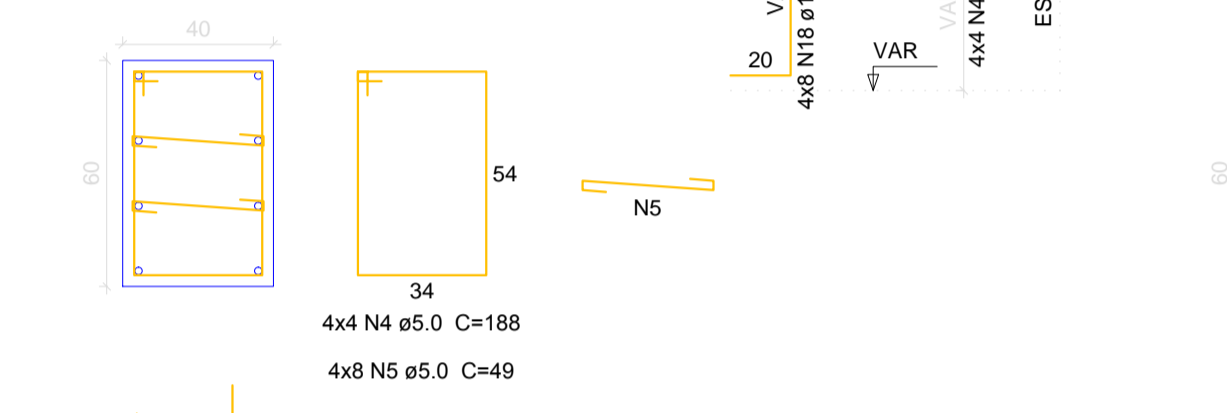
ESC 1:20



P6=P7=P10=P11

FUNDAÇÃO - L1

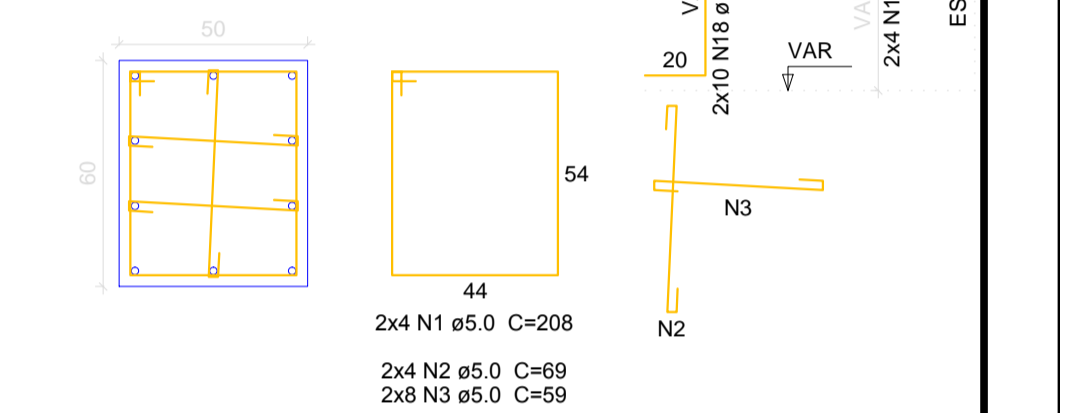
ESC 1:20



P5=P8

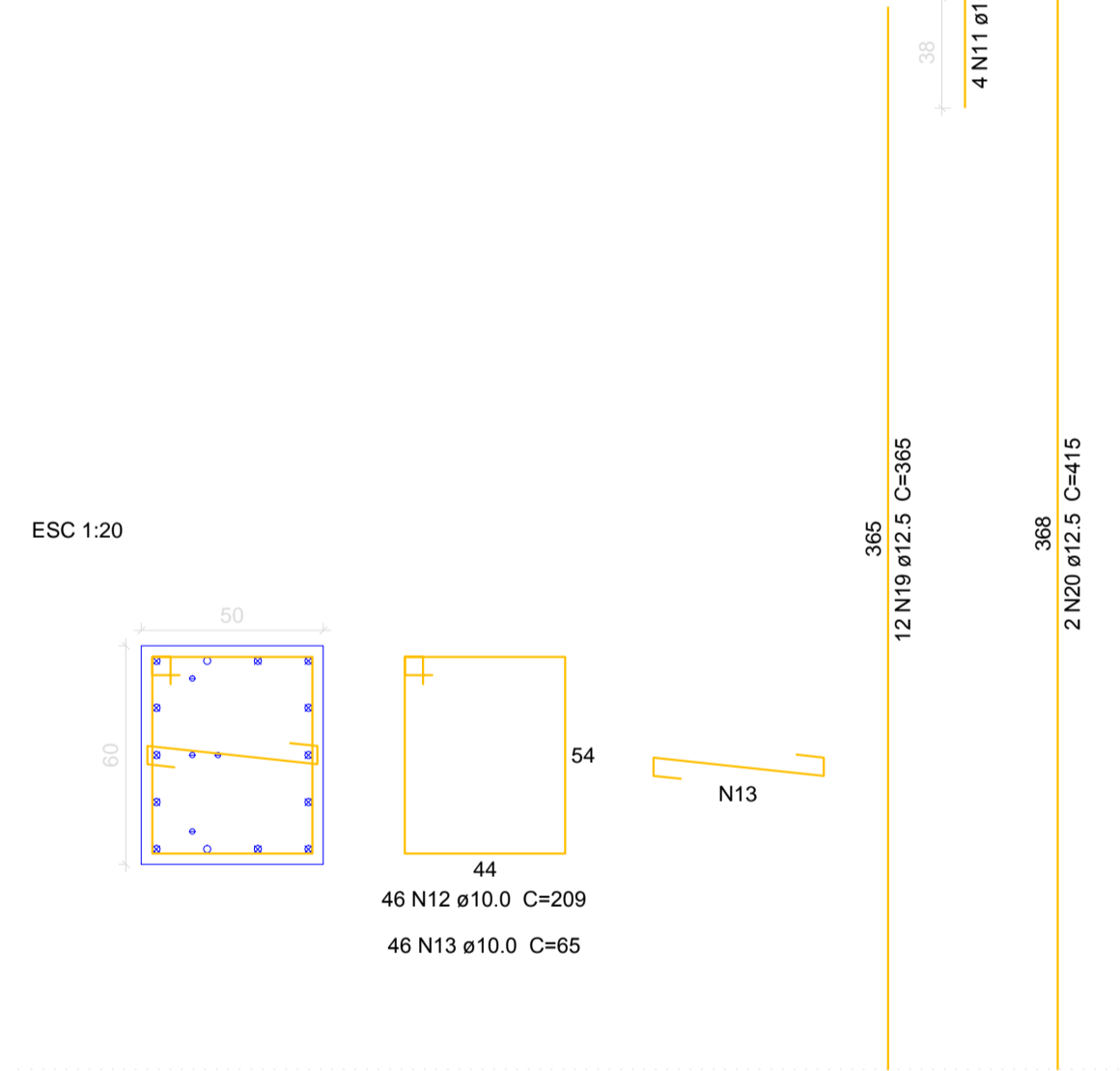
FUNDAÇÃO - L1

ESC 1:20



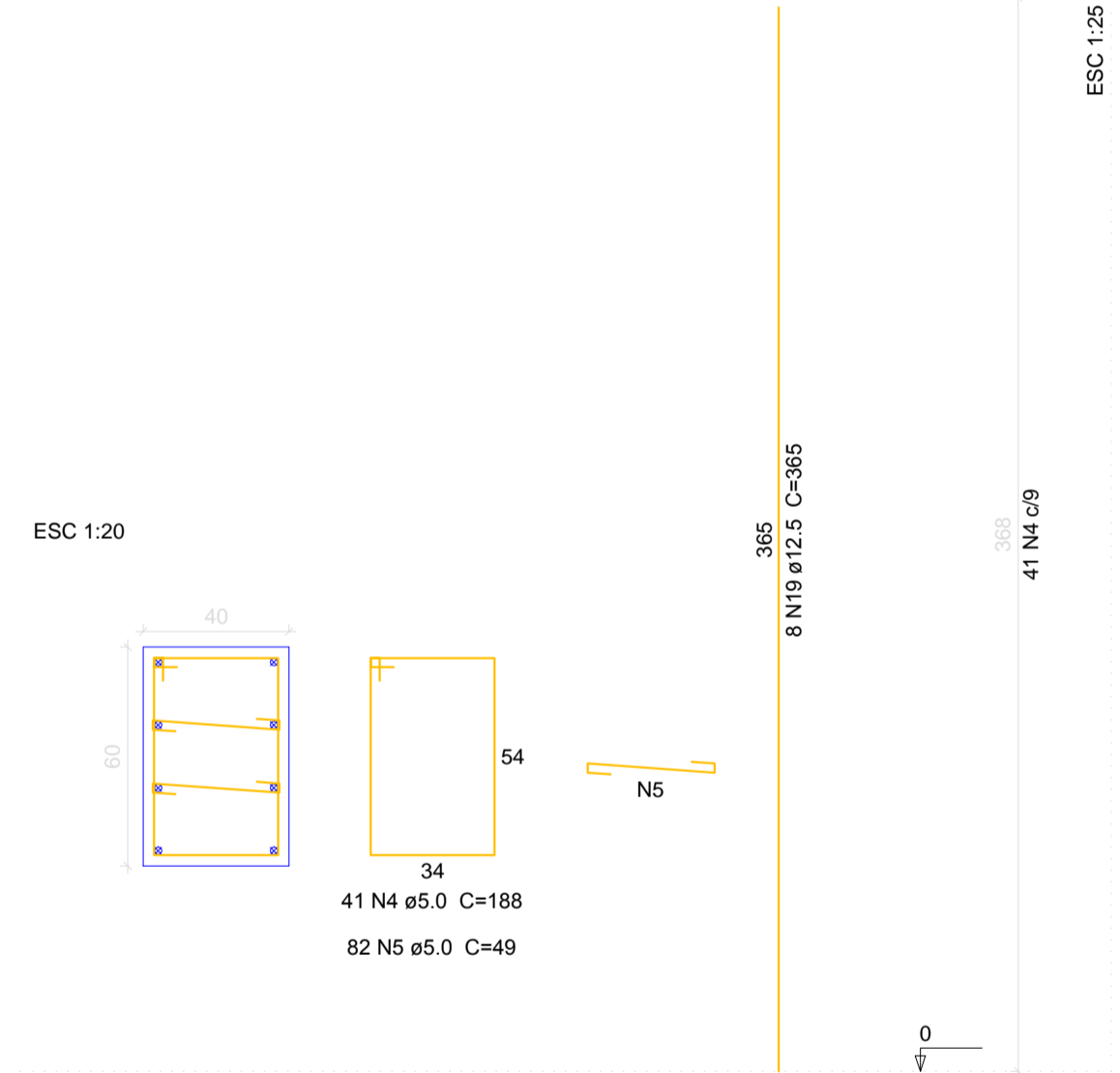
P1=P4

1 - L2



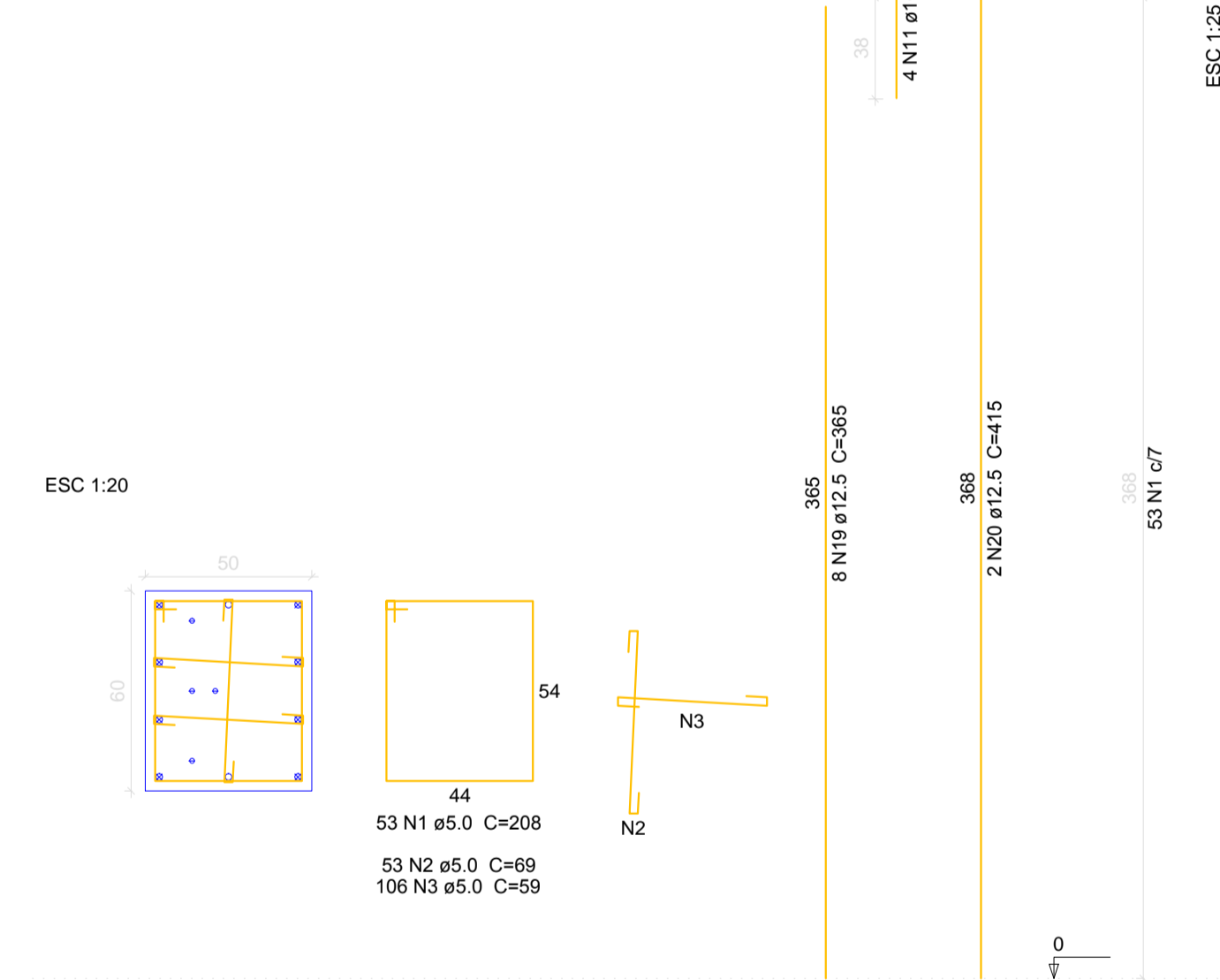
P2=P3=P10=P11

1 - L2



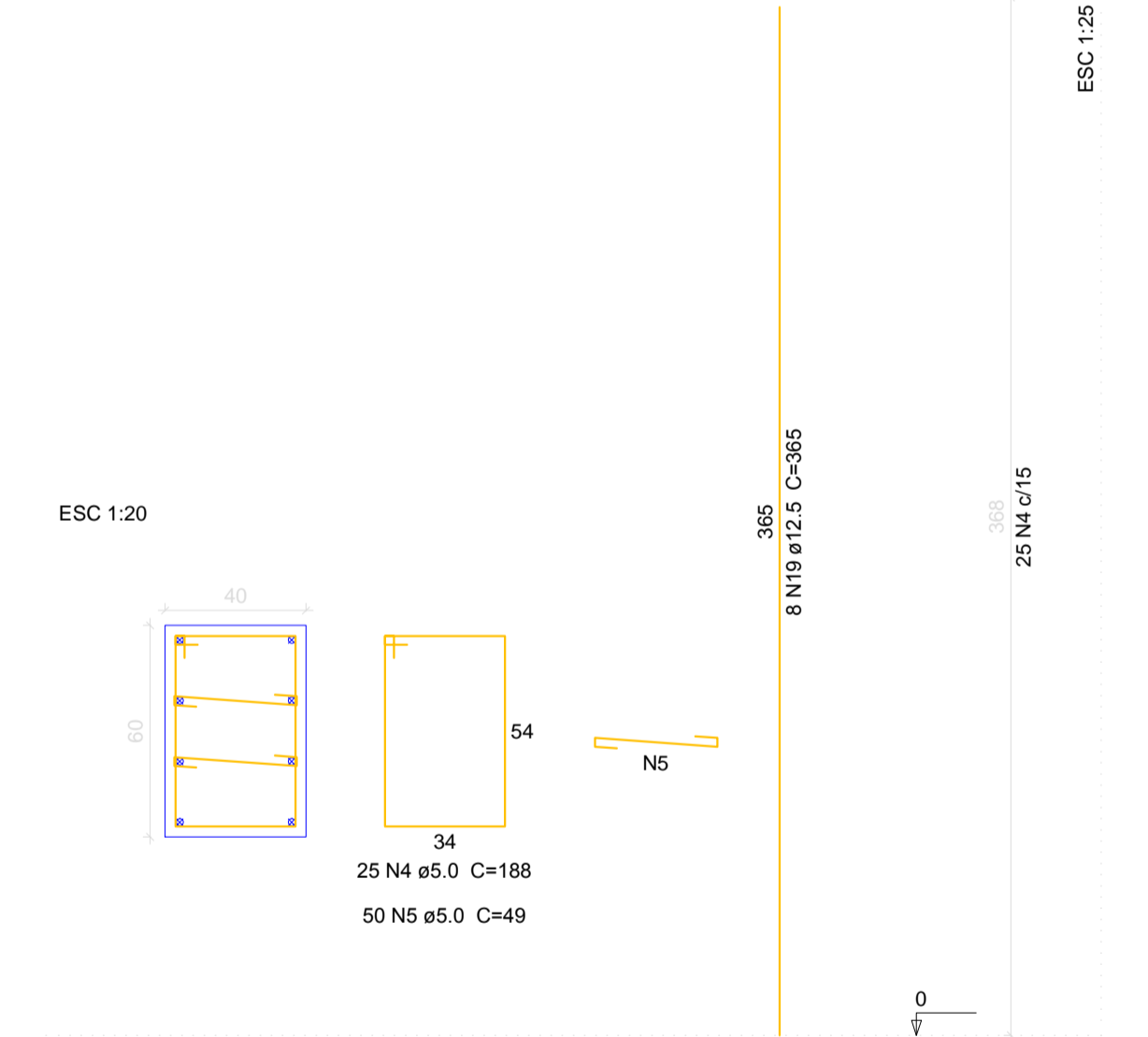
P5=P8

1 - L2



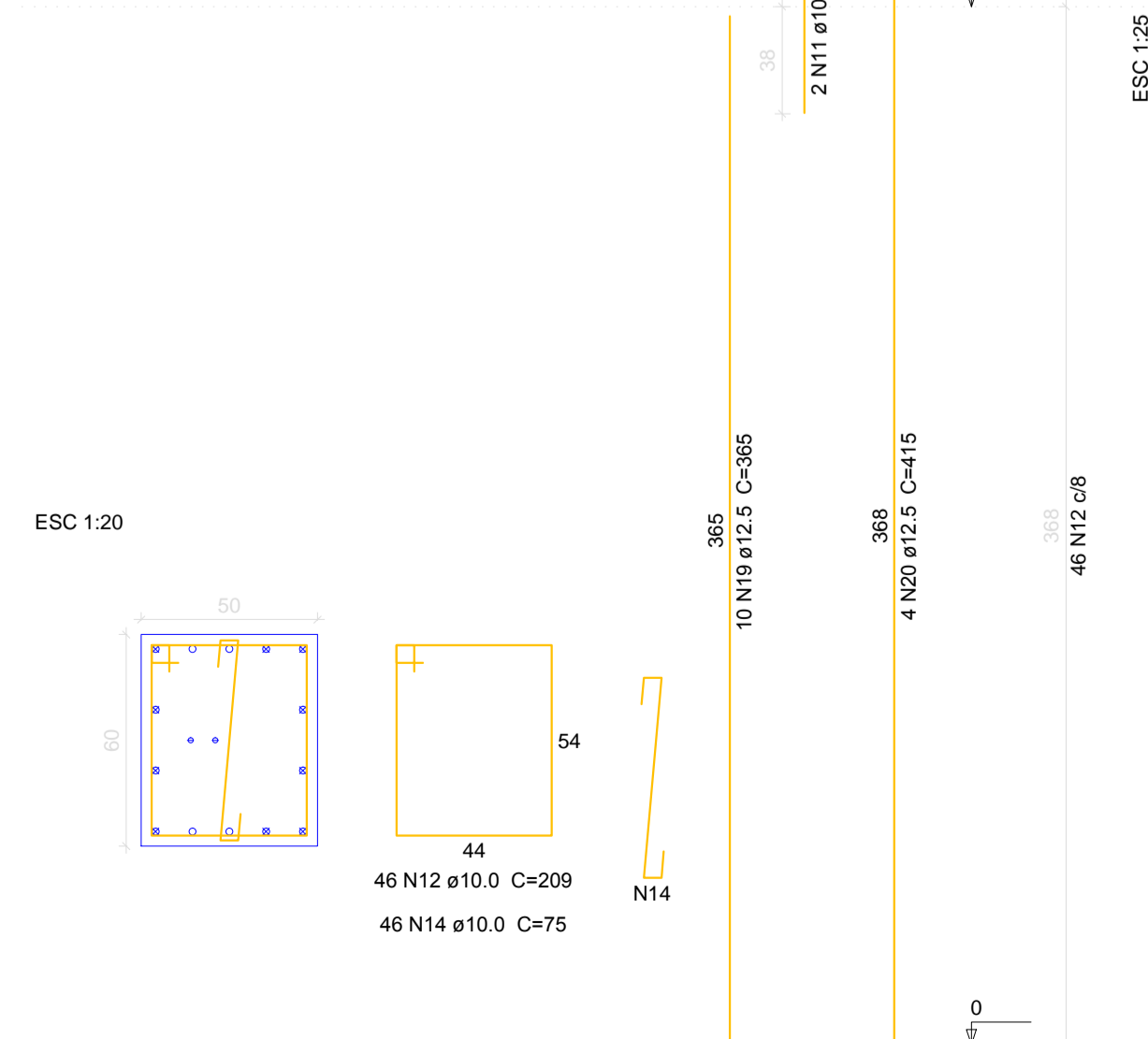
P6=P7

1 - L2



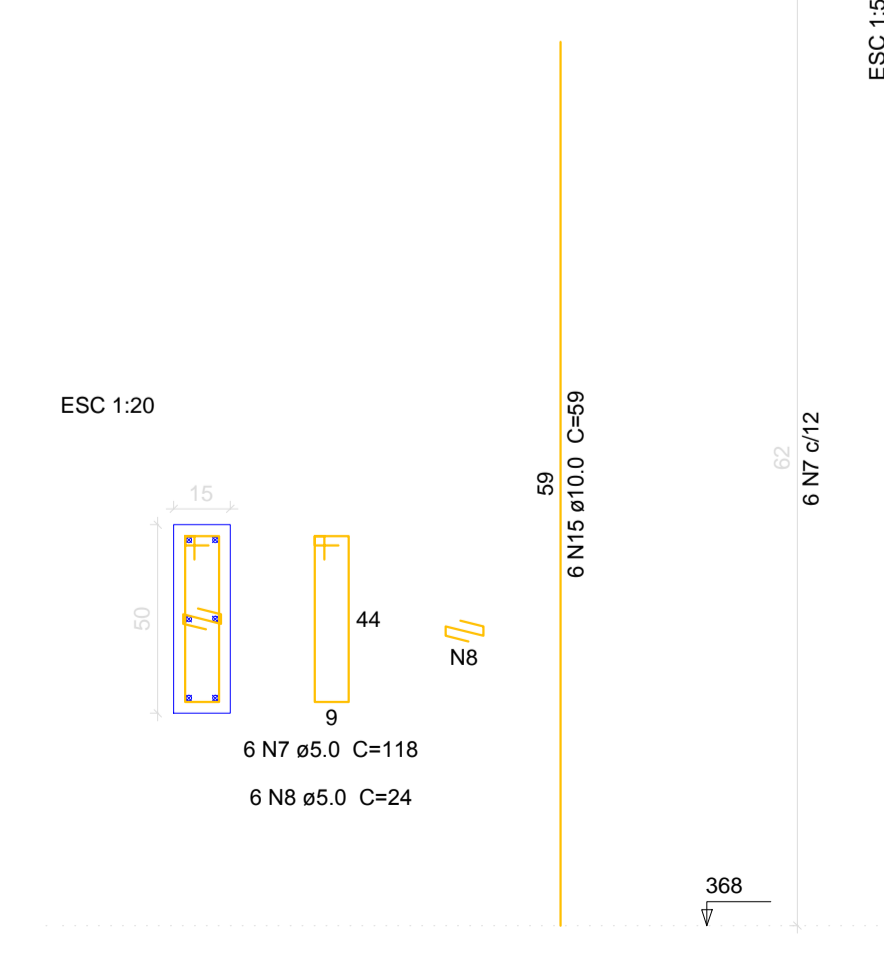
P9=P12

1 - L2



P1=P4=P5=P8=P9=P12

2 - L3



Relação do aço

- 1: 2xP1, 4xP2, 2xP5, 2xP6, 2xP9
- 2: FUNDAÇÃO: 6xP1, 2xP2, 2xP5, 4xP6, 2xP9

AÇO	N	DIAM	Q	UNIT (cm)	C.TOTAL (cm)
CA60	1	5.0	146	208	30368
	2	5.0	162	69	11178
	3	5.0	324	59	19116
	4	5.0	244	188	45872
	5	5.0	488	49	23912
	6	5.0	36	118	4248
	7	5.0	36	24	864
	8	10.0	20	75	1500
CA50	9	10.0	184	209	38456
	10	10.0	92	65	5980
	11	10.0	92	75	6900
	12	10.0	36	59	2124
	13	12.5	28	VAR	VAR
	14	12.5	4	34	376
	15	12.5	120	VAR	VAR
	16	12.5	108	365	39420
	17	12.5	16	415	6640

Resumo do aço

AÇO	DIAM	C.TOTAL (m)	PESO + 10% (kg)
CA50	10.0	549.6	372.7
CA60	5.0	626.5	663.9
PESO TOTAL			
CA50			1036.6
CA60			229.8

Vol. de concreto total (C-25) = 13.98 m³  
Área de forma total = 111.43 m²



PREFEITURA MUNICIPAL DE GUIRATINGA/MT

DATA: 10/02/2020

ESCALA: INDICADA

PROJETO DE ESTRUTURAS DE CONCRETO

FOLHA N.º: 03/06

DETALHAMENTO DE BLOCOS E PILARES

DBRA: PONTE MISTA DE 11,50 M X 4,50 M SOBRE O CÓRREGO JATOBÁ

RESPONSÁVEL TÉCNICO:

LOCAL: MUNICÍPIO DE GUIRATINGA/MT, REGIÃO DISTRITAL DE VALE-RICO, (16°24'39.83"S / 54°10'55.57"O)

ENG. CIVIL VÂNCEDO BUENO DE SÁ  
CREA: 029738MT