

**Relação do aço**

1: V1, V2, V3, V4, V6, V7, V8

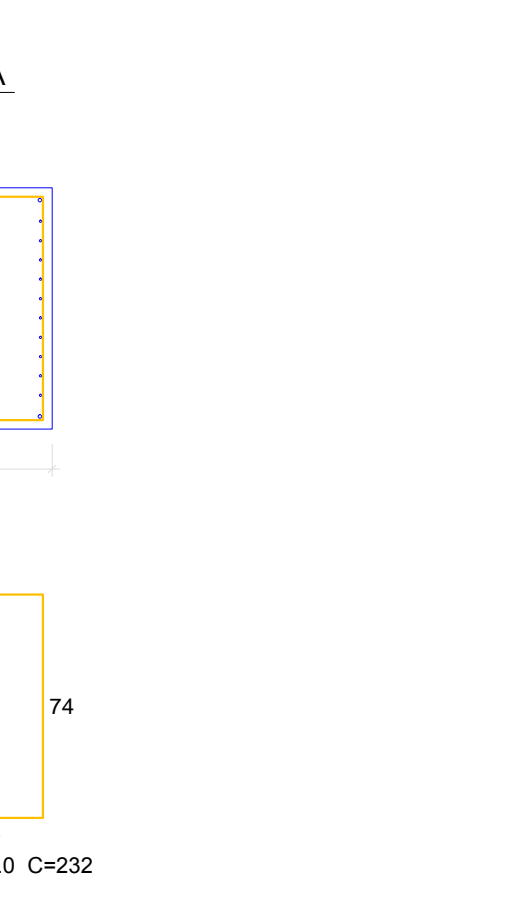
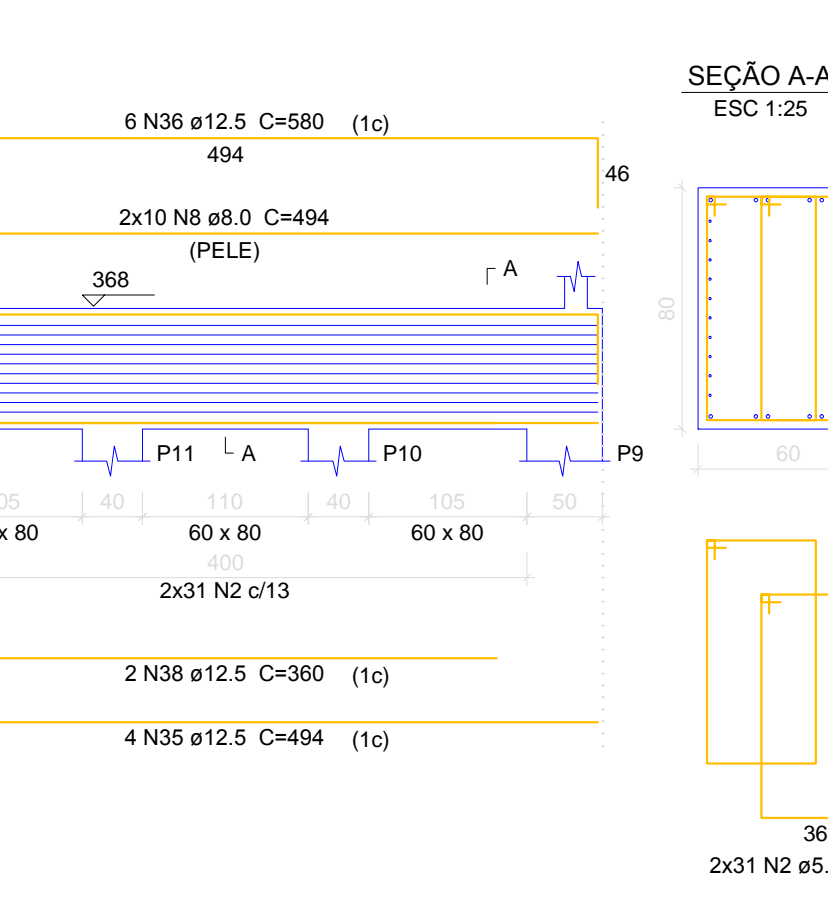
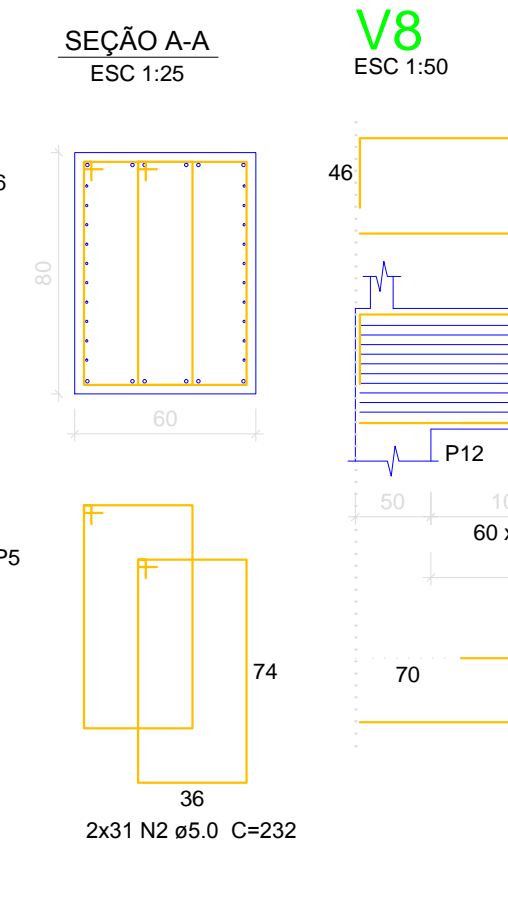
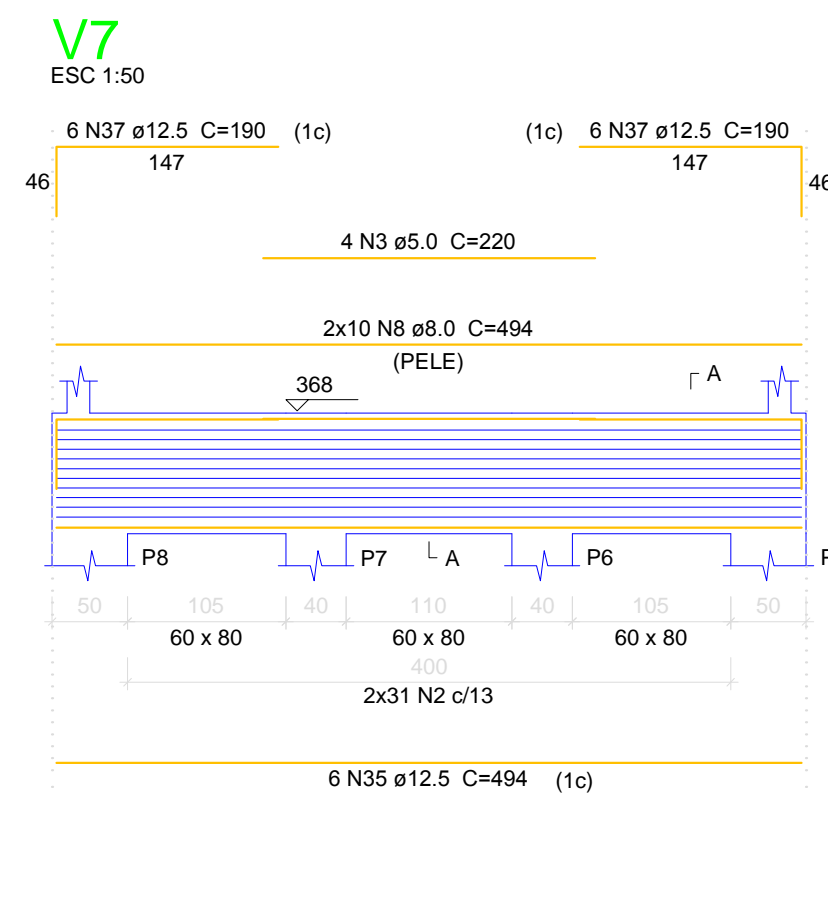
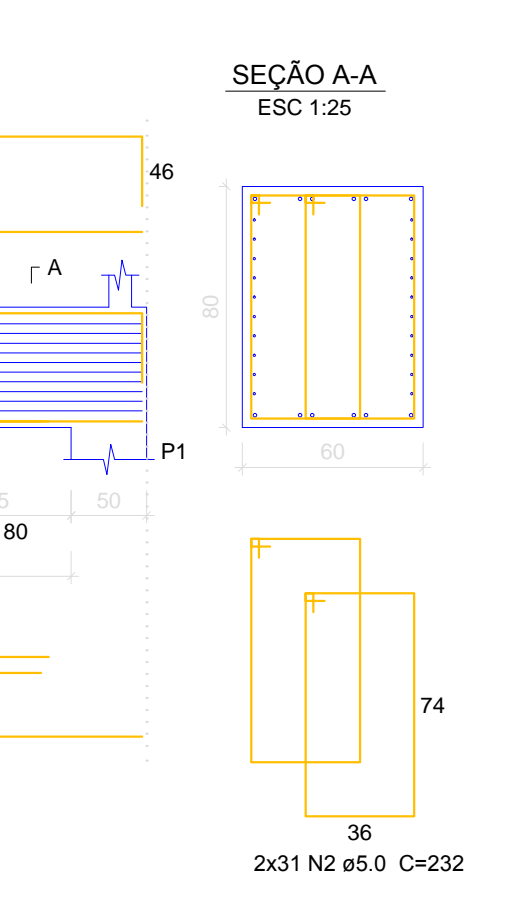
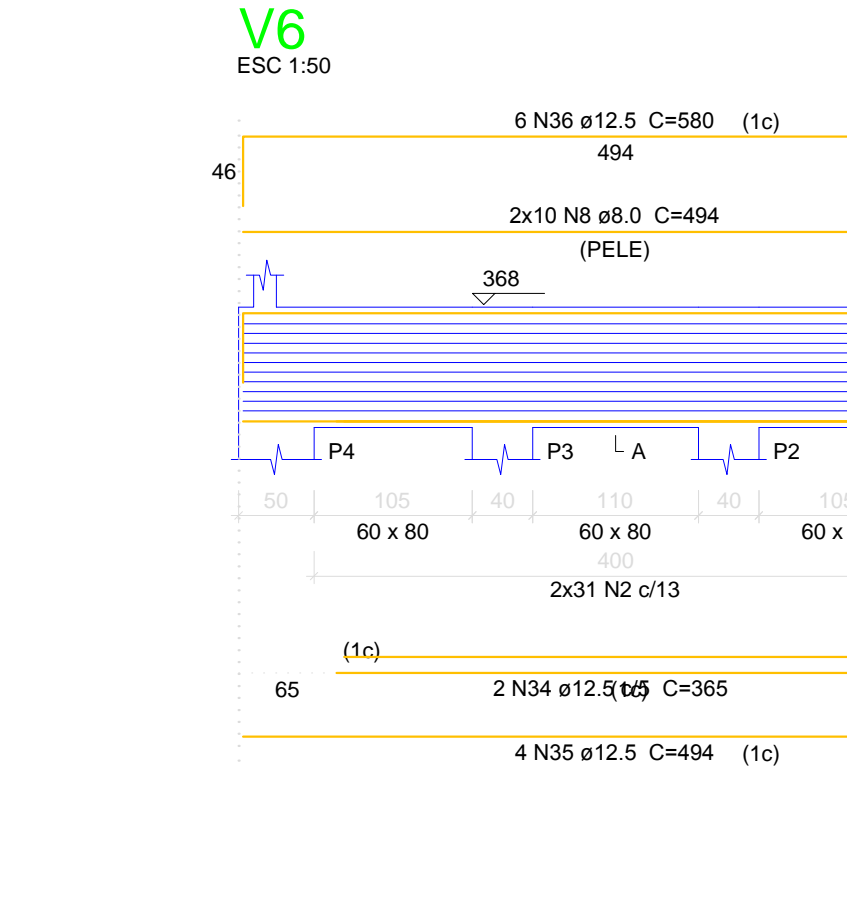
2: FUNDAÇÃO: V1, V2, V3

AÇO	N	DIAM (cm)	Q	UNIT (cm)	C.TOTAL (cm)
CA60	1	5.0	434	228	98952
	2	5.0	186	232	43152
	3	5.0	4	220	880
	4	5.0	170	272	46240
	5	5.0	4	280	1040
	6	5.0	80	118	9440
	7	8.0	56	1154	64624
	8	8.0	60	494	29640
	9	10.0	84	494	41496
	10	10.0	12	216	2592
	11	10.0	4	142	568
	12	10.0	2	225	450
	13	10.0	20	513	10260
	14	10.0	2	365	730
	15	10.0	3	410	1230
	16	10.0	6	147	882
	17	10.0	4	1144	4576
	18	10.0	4	172	688
	19	10.0	4	782	3128
	20	12.5	2	330	660
	21	12.5	5	325	1625
	22	12.5	14	1154	16156
	23	12.5	4	310	1240
	24	12.5	2	755	1510
	25	12.5	2	735	1470
	26	12.5	4	240	960
	27	12.5	4	1077	4308
	28	12.5	4	258	1032
	29	12.5	1	320	320
	30	12.5	2	245	490
	31	12.5	2	358	716
	32	12.5	4	687	2748
	33	12.5	4	237	948
	34	12.5	2	365	730
	35	12.5	14	494	6916
	36	12.5	12	580	6960
	37	12.5	12	190	2280
	38	12.5	2	360	720

**Resumo do aço**

AÇO	DIAM	C.TOTAL (m)	PESO + 10 % (kg)
CA50	8.0	942.7	409.1
	10.0	666	451.7
	12.5	517.9	548.8
CA60	5.0	1997.1	338.6
<b>PESO TOTAL</b>			
CA50		1409.6	
CA60		338.6	

Vol. de concreto total (C-25) = 32.77 m³  
Área de forma total = 191.25 m²



**PREFEITURA MUNICIPAL DE GUIRATINGA/MT**

DATA: 10/02/2020 ESCALA: INDICADA

**PROJETO DE ESTRUTURAS DE CONCRETO** FOLHA Nº: 04/06

DETALHAMENTO DAS VIGAS

DBRA: PONTE MISTA DE 11,50 M X 4,50 M SOBRE O CÔRREGO JATOBÁ RESPONSÁVEL TÉCNICO:

LICAL: MUNICÍPIO DE GUIRATINGA/MT, REGIÃO DISTRITAL DE VALE-RICO, ( 16°24'39.83"S / 54°10'55.57"O) ENG. CIVIL VÂNCEDO BUENO DE SÁ CREA: 029738MT